

# Strainer

602 Series  
Double Cap Strainer

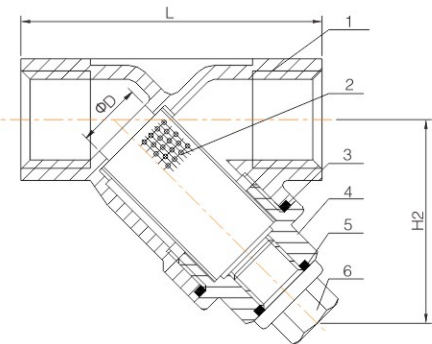


603 Series  
Flanged Strainer



## Technical Specification

- Nominal pressure: PN55



## Part List

No.	Part	Material
1	Body	CF8M/CF8
2	Filter	304
3	Gasket	PTFE
4	Cover	CF8M/CF8
5	Bolt seal	PTFE
6	Discharge plug	CF8M/CF8

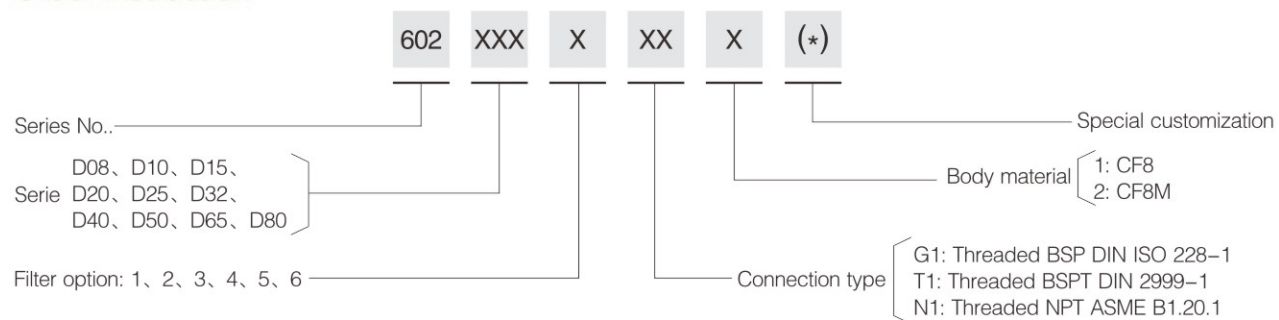
## Main Dimension

Size	DN8	DN10	DN15	DN20	DN25	DN32	DN40	DN50	DN65	DN80
ΦD	14	14	14	20	25	32	40	50	60	80
H2	44	44	44	52	63	67	74	86	104	128
L	65	65	65	80	90	105	120	138	178	210

## Filter Option

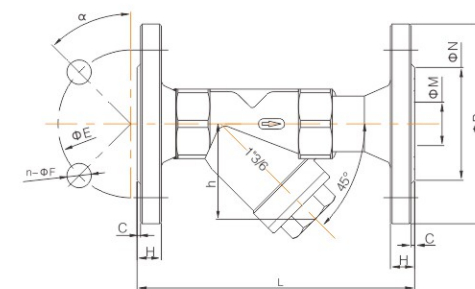
Filter Option	DN8/ DN10/DN15	DN20	DN25	DN32	DN40	DN50	DN65	DN80
1 20 mesh perforated filter	✓	✓	✓	✓	✓	✓	✓	✓
2 30 mesh wired filter	✓	✓	✓	✓	✓	✓	✓	✓
3 30 mesh + frame	✓	✓	✓	✓	✓	✓	✓	✓
4 80 mesh + frame	✓	✓	✓	✓	✓	✓	✓	✓
5 100 mesh + 20 mesh	✓	✓	✓	✓	✓	✓	✓	✓
6 100 mesh + frame	✓	✓	✓	✓	✓	✓	✓	✓

## Order Instruction



## Technical Specification

- Nominal pressure: PN16
- Flange standards: JB/T82.1-1994; ISO/DIN/JIS is also available



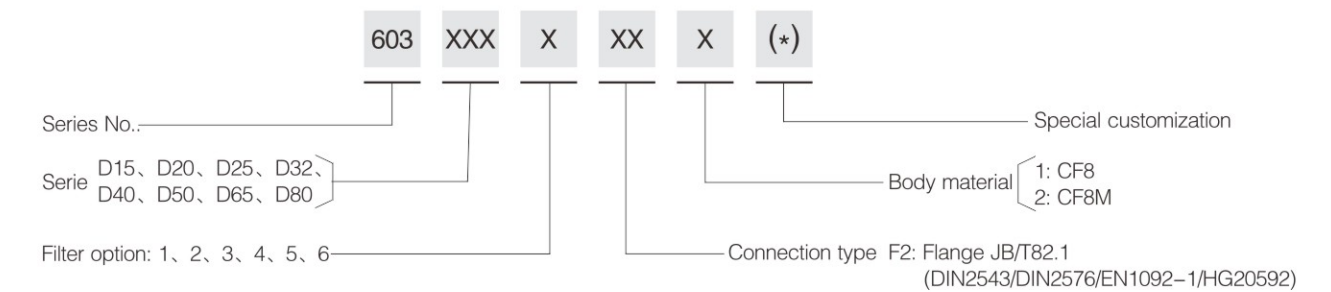
## Main Dimension

Size	L	C	H	h	ΦE	n-ΦF	ΦM	ΦN	φP	α
DN15	145	2	14	37	65	4-14	16	45	95	45°
DN20	155	2	14	45	75	4-14	20	56	105	45°
DN25	155	2	14	54	85	4-14	25	65	115	45°
DN32	185	2	16	59	100	4-18	32	78	140	45°
DN40	200	3	16	66	110	4-18	36	84	150	45°
DN50	215	3	16	77	125	4-18	49	100	165	45°
DN65	290	3	18	93	145	4-18	66	120	185	45°
DN80	315	3	20	118	160	4-18	78	135	200	22.5°

## Filter Option

Filter Option	DN15	DN20	DN25	DN32	DN40	DN50	DN65	DN80
1 20 mesh perforated filter	✓	✓	✓	✓	✓	✓	✓	✓
2 30 mesh wired filter	✓	✓	✓	✓	✓	✓	✓	✓
3 30 mesh + frame	✓	✓	✓	✓	✓	✓	✓	✓
4 80 mesh + frame	✓	✓	✓	✓	✓	✓	✓	✓
5 100 mesh + 20 mesh	✓	✓	✓	✓	✓	✓	✓	✓
6 100 mesh + frame	✓	✓	✓	✓	✓	✓	✓	✓

## Order Instruction



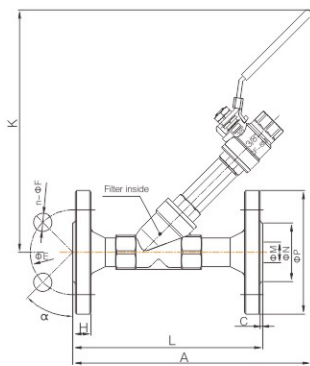
# Strainer

604 Series  
Filter Discharge Valve

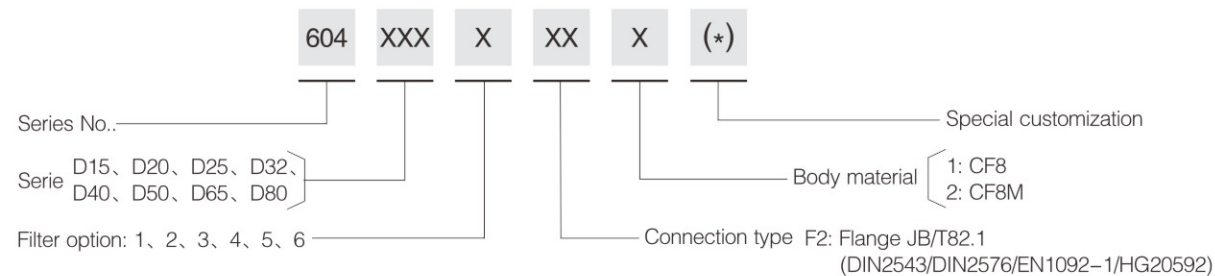


## Technical Specification

- Nominal pressure: PN16
- Flange standards: JB/T82.1-1994; ISO/DIN/JIS is also available



## Order Instruction



## Main Dimension

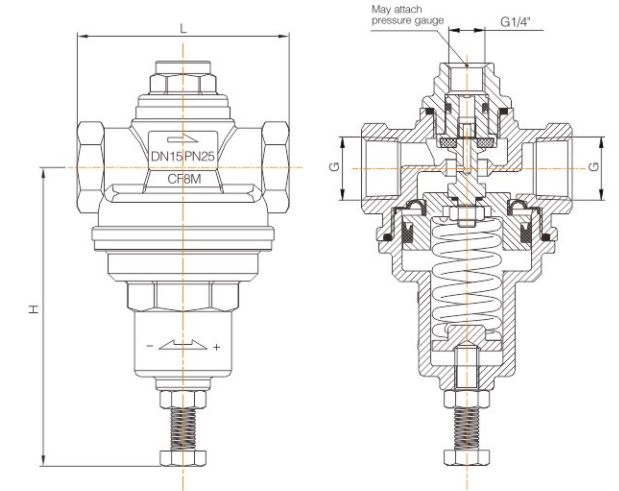
Size	L	C	H	ΦE	n-ΦF	ΦM	ΦN	ΦP	A	K	α
DN15	145	2	14	65	4-14	16	45	95	256	205	45°
DN20	155	2	14	75	4-14	20	56	105	270	215	45°
DN25	155	2	14	85	4-14	25	65	115	280	235	45°
DN32	185	2	16	100	4-18	32	78	140	300	240	45°
DN40	200	3	16	110	4-18	36	84	150	310	250	45°
DN50	215	3	16	125	4-18	49	100	165	320	260	45°
DN65	290	3	18	145	4-18	66	120	185	340	265	45°
DN80	315	3	20	160	8-18	78	135	200	385	300	22.5°

## Filter Option

Filter Option	DN15	DN20	DN25	DN32	DN40	DN50	DN65	DN80
1 20 mesh perforated filter	√	√	√	√	√	√	√	√
2 30 mesh wired filter	√	√	√	√	√	√	√	√
3 30 mesh + frame	√	√	√	√	√	√	√	√
4 80 mesh + frame	√	√	√	√	√	√	√	√
5 100 mesh + 20 mesh	√	√	√	√	√	√	√	√
6 100 mesh + frame	√	√	√	√	√	√	√	√

# Pressure Reducing Valve

700 Series  
Pressure Reducing Valve



\* Product does not include pressure gauge, which can be ordered separately

## Technical Specification

- Nominal pressure: PN25
- Pressure range: 1-6bar (15-87psi), 4-10bar (58-145psi), 8-13bar (116-189psi), 3 options available
- Medium Temperature: -15°C — +100°C
- Seal material: FPM
- Control type: Normally open
- Connection type: Threaded connection (BSP, BSPT, NPT)
- Body material: CF8M

## Function Principle

Pressure reducing valve is a N.O. valve that controls incoming fluid pressure to a desired range at outlet, by adjusting spring force and balancing it with the pressure applied by the passing medium. It also serves to stabilize the flow in a pipeline after the valve.

## Advantages

- All valve parts are made of stainless steel CF8M, suitable for water, weak acid and weak base, etc.
- The valve combines the structure design of a piston type valve and a diaphragm type valve to achieve superior service life.
- Simple structure, fast reaction and accurate pressure adjustment.

## Main Dimension

Size	G	H	L	Flow value Kv(m <sup>3</sup> /h)
DN15	1/2"	100	70	2.1
DN20	3/4"	100	85	3.4
DN25	1"	105	92	5.5

## Order Instruction

