

Filling Valve

1A2 Series
Filling Valve with
Internal Sealing



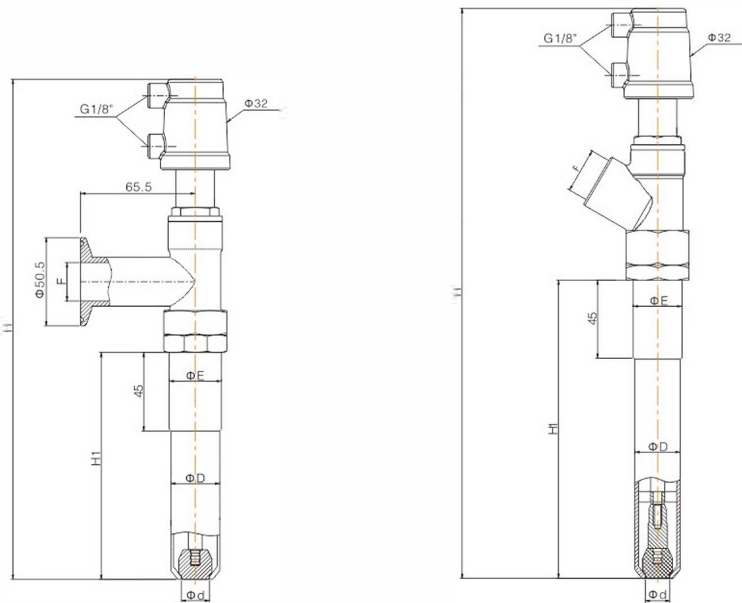
* Customization available

Technical Specification

- Control type: Double acting spring return, Double acting without spring
- Operating pressure: 0–7bar (0–102psi)
- Control pressure: 3–4.5bar (44–65psi)
- Body material: CF8M
- Seal material: PTFE
- Medium temperature: –10°C — +120°C
- Ambient temperature: –10°C — +80°C

Advantages

- It is widely used in filling machinery, especially for applications with viscous, pasty and even foamy fluids.
- Fast, accurate and stable filling.
- Delicate and compact, easy to arrange pipeline layout.
- Special nozzle structure and sealing design ensure no dripping leakage.
- Bottom chamfer structure of the filling nozzle self-locates and enables submerged filling.
- The valve utilizes bottom seal and seal ring for connection to valve stem in order to avoid fluid residue and allow effortless cleaning.
- Internal suction structure recovers dripping liquid along the pipe wall.



Main Dimension (1A2 Series)

Size	Connection method	Actuator	ΦD	Φd	F	H	H1	ΦE (Optional)
DN15	Threaded connection	32	12	5	G1/2 NPT1/2 BSPT1/2 Φ 16	210–530	60–380	Φ 20/M22X1.5
			14	6.5				Φ 20/M22X1.5
			16	8				Φ 25/M25X1.5
			18	9				Φ 25/M25X1.5
			20	10				Φ 25/M25X1.5
DN25	Tri-clamp connection	32	18	9	M26 × 1.5/ Φ 22	217–537	60–380	Φ 28/M28X1.5
			20	10				Φ 28/M28X1.5
			22	11.5				Φ 28/M28X1.5
			24	13				Φ 28/M28X1.5
			26	14				Φ 28/M28X1.5
			28	16				Φ 30/M30X1.5