

# Diaphragm Valve

Pneumatic Tank  
Bottom Diaphragm



Manual Tank  
Bottom Diaphragm

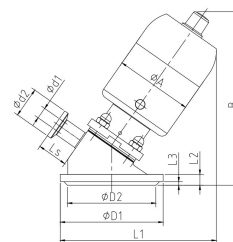


## Function Principle

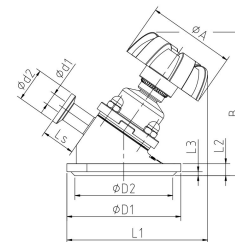
The bottom valve of the tank is welded to the bottom of the container to achieve the best effect of emptying, cleaning and disinfection. In addition, the working medium can be well mixed according to various technological requirements during the operation. The most important thing is that the sealing weir of the tank bottom valve has been close to the tank bottom wall to the greatest extent, so as to achieve the effect of zero dead angle.

## Advantages

1. Compact structure, can ensure installation in a small space.
2. Automatic emptying without dead angle. The valve body is integrally cast (structure without welding).
3. It is suitable for process control and can be sterilized at high temperature. The surface of the valve body can be mechanically polished or electro polished according to requirements, and the accuracy can reach 0.4um.
4. In terms of structure, it is more optimized in terms of flow rate and process rationality, and at the same time, it will not produce turbulent flow phenomenon during emptying.
5. All current international standard interfaces can be provided, such as welded joints, quick-release joints or threaded joints.
6. The valve body material used is 1.4435/316L stainless steel, and the material can also be customized according to customer requirements.
7. Optional manual and pneumatic operation.



Pneumatic Tank  
Bottom Diaphragm



Manual Tank  
Bottom Diaphragm

## Main Dimension

Size	Diaphragm	φ A	B	φ D1	φ D2	φ d1	φ d2	L1	L2	L3	Ls
DN15	10	65	145	85	73	9.4	25	130	12	3	25
DN20	10	65	145	85	73	15.75	25	130	12	3	25
DN25	25	88	195	120	108	22.1	50.5	178	16	3	25
DN40	40	109	220	150	138	34.8	50.5	210	18	3	35
DN50	50	129	255	180	168	47.5	64	240	22	3	35

Size	Diaphragm	φ A	B	φ D1	φ D2	φ d1	φ d2	L1	L2	L3	Ls
DN15	10	65	110	85	73	9.4	25	105	12	3	25
DN20	10	65	110	85	73	15.75	25	105	12	3	25
DN25	25	85	135	120	108	22.1	50.5	138	16	3	25
DN40	40	105	155	150	138	34.8	50.5	165	18	3	35
DN50	50	125	180	180	168	47.5	64	195	22	3	35